



Woodworking Education Center  
10544 Hwy 17, Maylene, AL 35114

# Guild News



[www.alabamawoodworkersguild.org](http://www.alabamawoodworkersguild.org)

## Next Meeting

Saturday,  
November, 19, 2011  
(Always the 3rd  
Saturday)

Pre-meeting  
9:30 to 10 am  
Meeting  
10 to 11 am

See page 2 for details

Don't forget your  
Show and Tell

**HAPPY  
THANKSGIVING!**

**This year's Christmas  
Party will be  
December 8th.**

## Inside this issue:

Next Meeting	2
Education Activities	2
Annual Show	3
Woodworking Education Center	4
WEC Usage Report	4
WEC Calendar	5

## Volume XXX Number 11

November, 2011

## President's Message



I hope everyone enjoyed Tim Tingle's slide presentation on wood sculpturing at our last meeting as well as I did. As a matter of fact I plan to visit Orr Park in Montevallo this afternoon to see some of his tree carvings first hand.

There has been lots of activity at the WEC this month. **A.R. Bray** and **Eddie Heerten** taught a class on making those wonderful Shaker Nesting Boxes. Hopefully we will see a few at Show-N-Tell this month.



**Bob Moore** has been leading a team each week to build a Paul Revere display for Montevallo's American Village. The buildings, trees and boat will be painted by the American Village staff and ready for teaching children American history in the spring.

The Habitat for Humanity cabinets are progressing nicely! You will see these at the next meeting. All members are invited to participate in building and installing these cabinets. The next phases consist of building the doors, drawer boxes, spraying and then assembly prior to installation. See **Preston Lawley** if you want to join in.

Lastly, don't forget...November is Toy Month! Ralph Hardwick, Lynn Smith and the entire Friday "Toy Group" want me to remind you that you should bring any toys you have been working on to the meeting. Representatives from Children's Hospital will be on hand to accept what I have been told is a LOT of wooden toys for their children.

See you there,  
Monta

**President:**

Monta King  
(205)664-7444

**Vice Pres:**

Dwight Hostetter  
(205)678-7661

**Treasurer:**

Walter Barnett  
(205)933-9207

**Secretary:**

Dan Langford  
(205)967-6378

**Webmaster:**

Brian Stauss  
(205)987-9997

**Guild News:**

Cheryl May  
(205)520-4457

**Board of Directors:**

Eddie Heerten  
John Lawson  
Robert McClure  
Bill Newman  
Preston Lawley  
Lynn Smith

**Toy Co-Chairs:**

Ralph Hardwick  
Lynn Smith

**Show Chair:**

John Lawson

**WEC Shop Managers:**

Cliff Daniels  
Bill Shivers

**Librarian:**

Eddie Heerten

**GUILD PATRONS**

*We are very fortunate to have the following patrons who support the Guild. They are excellent suppliers of products or services in the local area that provide monetary support or allow us to use their various facilities for Guild functions:*

**J.R. PREWITT & ASSOCIATES, INC.** Independent Insurance Agent—Founded in 1974, J. R. Prewitt & Associates, Inc. is a family owned agency that has grown to one of the largest firms in the Birmingham area. Representing over a dozen insurance carriers, the agency provides a full spectrum of insurance services to over 3500 clients. From individuals to multi-state corporations, the agency prides itself on it's loyal, long term client base as a result of unparalleled customer service. Contact us for your personal, business, or professional insurance needs.

2146 Highland Ave. South,  
Birmingham, AL 35205  
Telephone (205)-933-9207  
Fax (205)-930-0450

## November Meeting

As has become tradition, the November meeting will be dedicated to the outstanding efforts of our Toy Group. The main event is the presentation of this year's toys to the Children's Hospital. ABC 33/40 TV may be there to interview and take video of the toys and the presentation.

In addition, John Lawson will be presenting the People's Choice Best of Show ribbon to this year's winner from the Annual Woodworker Show at the Hoover Library.

We will also be holding our annual election of Officers and Directors. — see below for details.

Dwight Hostetter

## Election of 2012 Officers and Directors Scheduled for November Meeting

As specified by AWG by-laws, earlier this year President Monta King appointed a Nominations Committee to determine a slate of officer and director nominees for next year. Those nominees were presented by the Committee at the October AWG meeting. New officers and directors will be elected at the November AWG meeting. Members may vote for the nominees from the Committee or from any nominations received from the floor by the general membership.

Our thanks to all those who have expressed willingness to serve in an elected role in 2012 and to the members of the Nominating Committee.

The proposed slate of elected officers and directors for 2011 is:

President – Cliff Daniels  
Vice President – Cheryl May  
Treasurer – Walter Barnett  
Secretary – Bob Moore  
Board Members – Patrick Bush & Ron Griffin

## Education Activities Report

The Shaker Box class has now concluded and a good time was had by all. The students have a set of "keepers", or molds to use in making several different sizes of boxes and each student made a three piece nesting set during the class. Several of the students are reportedly now busy making Christmas gifts for very fortunate friends and family members. The students would like to express their appreciation to the teachers, A.R. Bray and Eddie Heerten, for their time and patience in sharing their expertise.

The Shaker Box class was the last formal class scheduled for 2011. The focus of team events now shifts toward the Habitat for Humanity cabinet building project. This will be a great time for the students of last year's cabinetmaking class to demonstrate their skills. Remember that everyone is welcome to participate in this year's cabinet building project. There is no charge for this activity.

Robert McClure

## Alabama Woodworkers Guild Annual Show

First, a big thank you to all who entered the 2011 AWG show, and congratulations to all who won a ribbon (and it's not too early to begin planning what you will enter in next years show).

There were 83 projects entered in this years' show. The total number of people who entered was 36. While we would like to see that number much higher there were many positives:

There were many new entrants this year and, for beginners, I thought their work was excellent. The overall quality of all the work was excellent, or superior to what I have seen before. The reaction to people visiting the library very good. Many people were delighted and surprised.

Unfortunately we are still the "best kept secret" in Birmingham as far as craft/art goes. We will need to do a better job next year of publicity and getting more people in to see the show

We also displayed 12 pieces of 2d or 3d art that hung on the walls for October and will continue thru November. When the library gives me the date to pick up the entries I will get it to Brian Stauss and maybe we can do an email blast to let everyone know when to pick up.

The reception was better attended than last year. I believe it helped to hold the reception on Monday vs. Tuesday last year, and the publicity that Dan Langford and Dwight Hostetter (and others) came up with helped as well.

Below are the winners of Ribbons:

	<u>Blue</u>	<u>Red</u>	<u>White</u>
Traditional Furniture			
Beginner	Wayne Burris		
Intermediate	Jeff Hood	Lloyd Harper	Brian Stauss
Advanced	Ron Griffin	Ron Griffin	Eddie Heerton
Contemporary Furniture			
Beginner	Thom Nix	Thom Nix	
Intermediate	Jean Spruill	Pat Bush	Pat Bush
Advanced	Buzz and Nelda Kelly	Dwight Hostetter	
Wood Turnings			
Beginner			
Intermediate	Ron Griffin	Ron Griffin	Ron Griffin
Advanced	Mark Couto	Bill Hubbard	Dwight Hostetter
Miscellaneous			
Beginner	Jim Burt	Christopher Heerten	Jim Anchors
Intermediate	Jim Woodward	Preston Lawley	Preston Lawley
Advanced	Cliff Daniels	Dwight Hostetter	Cliff Daniels
Carving (Open)	Bill Hubbard	Chet Alexander	Chet Alexander
Tools (Open)	Ron Griffin	A.R. Bray	Tom Surtees
Toys (Open)	Cliff Daniels	Ralph Hardwick	Ralph Hardwick

John Lawson

**THE AWARDS & ENGRAVING PLACE** is a full service engraving shop, offering both laser and flatbed rotary engraving. We engrave directly on wood, glass, plastic, and a variety of coated metals. We offer plaques, glass and acrylic awards, trophies, interior signs and name badges. We have been in business in Hoover since 1987. Contact Ken Murer, The Awards & Engraving Place, 1883 Hoover Court, Hoover, AL 35226, (205)-823-7676 fax(205)-822-1111

**AFFORDABLE WOOD TOOLS** by Paul Varden  
Wood Lathe accessories to fit any size wood lathe. Screw Chucks, Face Plates and Tool Rest. General Machining also available. Paul Varden-Master Machinists-35 years of experience.  
7029 Dickey Springs Road Bessemer,AL 35226  
H-205-428-9945  
C-205-908-9945  
email-paul2010@directv.net

**MAX TOOL, INC.** is a distributor of cutting tools, abrasives, MRO and machine shop supplies. Founded in 1985, we are located in Birmingham, Alabama. Max Tool represents the product lines of many of industry's foremost manufacturers from around the world..  
119 B Citation Court, Birmingham, AL 35209  
(205)-942-2466  
www.maxtoolinc.com

**SARA'S TAX SERVICE**  
100 Foust Avenue, Hueytown, AL 35023  
205-497-4020 Fax 205-497-4011

**K'M TREE AND CLEARING**  
Firewood, stump removal, trimming, topping, dangerous tree removal. 24 hour emergency storm service. 205-965-2821

**SNOW'S SHARPENING SERVICE** Ed Snow can take care of all of your saw blade sharpening needs. You can leave and pick up your blade at Woodcraft or you can contact Ed at 205-218-1885 or reds-now\_3@hotmail.com

**WOODCRAFT** Helping you make wood work.  
www.woodcraft.com  
205-988-3600

**HARDWOODS, INC. OF ALABAMA** When you think of wood, think of us.  
www.hardwoodweb.com  
800-467-4160

**WELCOME  
NEW  
MEMBERS!**

**Benjamin  
Gallagher**

**Ron Sawyer**

**Robert Tumiatì**

**Mike Scott**

**Jack Taylor**

## Woodworking Education Center (WEC)

We recently acquired some 8/4 and 12/4 white oak. It will be priced for sale and placed in the lumber rack shortly.

Most of the equipment is in good working order (a new tire was recently installed on one wheel of the Delta band saw). However I would like to caution you when using the Walker-Turner band saw. The blade guard is broken and the homemade one on there now is not very protective. Also the blade does not track very well on the wheels. There are still some members that do not know how to properly install the paper on the Grizzly drum sander. I recently found that someone had installed paper and taped it on both ends of the drum. This of course provided no tension on the paper so it naturally it came off when used. If you don't know the proper way to install the paper please ask a supervisor. The paper is too expensive to waste.

You will notice that all the table saw sleds and jigs have been placed under the saw out feed tables. Please keep them there when not in use. Where they were stored before blocked access to the clamp racks.

I shouldn't have to remind you that if you use the WEC it is your responsibility to clean up after yourself but apparently some members have forgotten. Clean up doesn't just mean sweeping or vacuuming around an area it also means disposing of your scrap, putting tools back where they belong (including drill bits), emptying trash cans and emptying the dust collector drum outside. One area that has really been ignored is around the lathes. When you

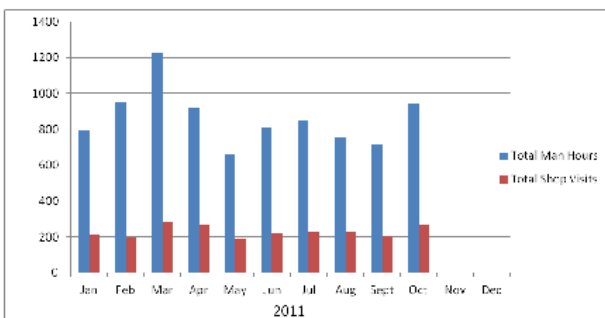
turn chips fly everywhere including the shelves that hold the turning tools, the window sills, lathe beds, the table holding the mini lathe and the stand which the grinder is mounted. I was at the WEC one day recently and spent half a day just cleaning up in the areas mentioned above. If you are turning please clean all the above areas. If you use the grinder to sharpen tools that also needs to be cleaned up when you finish.

Cliff Daniels

AWG Shop Usage Report  
October, 2011

Number of Shop Visits				
Total	Charitable (Toys)	Supervision	Woodworking	Classes & Other Activities (Shop improvements / maintenance)
267	42	26	53	146
% of Total				
100	15.7	9.7	19.9	54.7

Number of Hours Worked				
Total	Charitable (Toys)	Supervision	Woodworking	Classes & Other Activities (Shop improvements / maintenance)
945	163	108.5	128.5	545
% of Total				
100	17.2	11.5	13.6	57.7



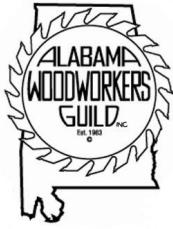
## Comfort Bucket

There's a bucket sitting on the sign in table at each of our meetings. **That bucket is there for you to put in a couple of bucks for the "comfort" of having a nice place to meet.** Those contributions help to defray the costs of heating, air conditioning, refreshments, and paper products. There was a time when we met in a warehouse without any of these amenities and at the convenience of others. Be grateful!

# WEC NOVEMBER/DECEMBER CALENDAR

Sunday	Monday	Tuesday	Wednesday	Thursday	Friday	Saturday
20[47] 1:00pm - 5:00pm .... Mike Key	21	22	23	24	25	26
					9:00am - 1:00pm R Hardwick 11:00am - 3:00pm OTH Gang - Toys 1:00pm - 5:00pm R Hardwick 5:00pm - 9:00pm .... Eddie Heerten	9:00am - 1:00pm .... Eddie Heerten 1:00pm - 5:00pm .... Eddie Heerten
27[48] 1:00pm - 5:00pm .... Mike Key	28	29	30	1 <u>Dec</u>	2	3
					NEWSLETTER: Officer Articles Due 9:00am - 1:00pm Ron Powell 11:00am - 3:00pm OTH Gang - Toys 1:00pm - 5:00pm Ron Powell 5:00pm - 9:00pm .... Mike Key	9:00am - 1:00pm Bob Moore-supervisor 1:00pm - 5:00pm Bob Moore-supervisor
4[49] 1:00pm - 5:00pm .... Brian Stauss	5	6	7	8	9	10
			6:30pm - 7:30pm AWG Board Meeting (J R Prewitt & Associates, 2146 Highland Avenue South)	6:00 PM Christmas Party at Homewood Senior Center	9:00am - 1:00pm Ron Powell 11:00am - 3:00pm OTH Gang - Toys 1:00pm - 5:00pm Ron Powell 5:00pm - 9:00pm .... Eddie Heerten	9:00am - 1:00pm .... Brian Stauss 1:00pm - 5:00pm Monta King
11[50] 1:00pm - 5:00pm .... Monta King	12	13	14	15	16	17
					9:00am - 1:00pm Randall Robertson - Supervisor 11:00am - 3:00pm OTH Gang - Toys 1:00pm - 5:00pm Troy Stroud- Supervisor 5:00pm - 9:00pm .... Mike Key	There is no monthly meeting in December 9:00am - 1:00pm -----No Supervisor 1:00pm - 5:00pm -----No Supervisor

*The most current WEC calendar is always available on-line at: <http://freecal.brownbears.com/awg>*



www.  
alabamawoodworkersguild  
.org

### About Us

Alabama Woodworkers Guild Newsletter is published monthly for its members and other interested parties. Guild meetings are held monthly on the third Saturday at 9:00 a.m. at the Woodworking Education Center, 10544 Hwy 17, Maylene, AL 35114

Information concerning the Guild may be secured by calling **Walter Barnett, Treasurer** at (205) 933-9207.



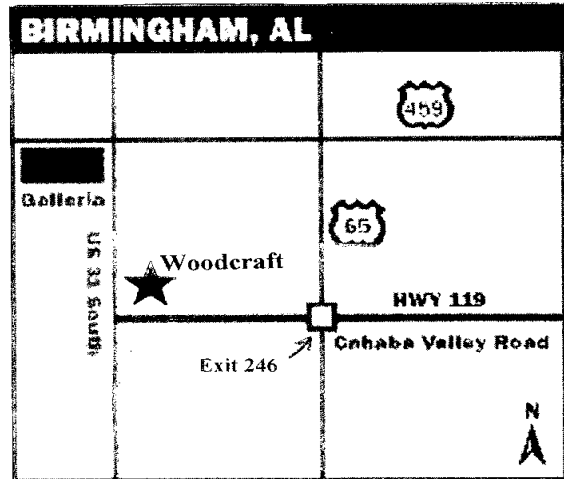
# WOODCRAFT<sup>®</sup>

**Helping You Make Wood Work<sup>®</sup>**

Phone 205-988-3600  
Fax 205-988-3612  
Website: www.woodcraft.com  
e-mail: WC511@aol.com

**Store Hours**  
M - T - W - F: 9AM - 7PM  
Th: 9AM-9PM  
Sat: 9AM-6PM  
Sun: Noon-5 PM

**Our new address is:**  
2215B Pelham Parkway  
Pelham, AL 35124



Directions:  
Take I-65 to Exit 246.  
Take Highway 119 West (Cahaba Valley Road) 3/4 of a mile to US 31.  
Turn right on US 31 and travel north approx. 0.3 mi.  
Our store is on the right (east) side of US 31.

www.hardwoodweb.com

180 Airview Lane  
Alabaster, AL 35007

Walk-Ins Welcome

Open 8am-5pm, Mon. - Fri.  
Open 8am-12pm Sat.

800-467-4160

Hardwoods  
incorporated



The Alabama Woodworkers Guild, Inc.  
P.O. Box 26665  
Birmingham, AL 35260

